



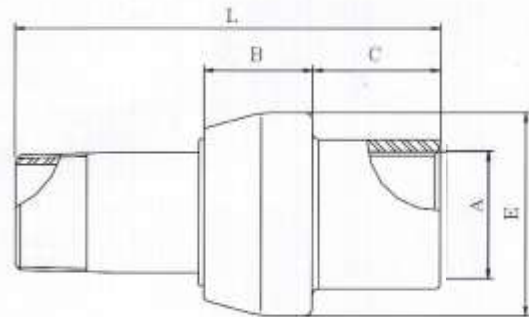
**MONOLITHIC ISOLATION JOINTS**  
**FLANGE KITS AND GASKETS**  
**CATHODIC PROTECTION**

Website - [www.ijasltd.co.uk](http://www.ijasltd.co.uk)  
 Email - [ijasltd@gmail.com](mailto:ijasltd@gmail.com)  
 Tel - 02380 696452

**MONOLITHIC ISOLATION JOINT SPECIFICATION – SERVICE / HOUSEHOLD**

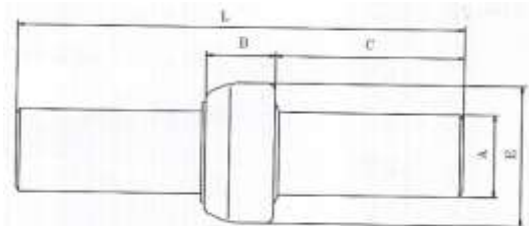
**MALE / FEMALE**

DIAMETER		DIMENSIONS (MM)					WEIGHT (KG)
INCH	MM	A	E	C	B	L	
1/2	15	21.3	46	25	28	100	0.4
3/4	20	26.7	53	27	30	110	0.5
1	25	33.4	60	29	32	120	0.7
1 1/4	32	42.2	71	32	35	135	1
1 1/2	40	48.3	77	32	37	145	1.2
2	50	60.3	90	36	38	150	1.7



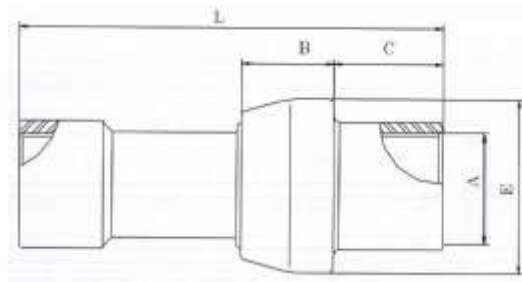
**WELD ENDS**

DIAMETER		DIMENSIONS (MM)					WEIGHT (KG)
INCH	MM	A	E	C	B	L	
1/2	15	21.3	46	90	28	210	0.5
3/4	20	26.7	53	96	32	225	0.7
1	25	33.4	60	105	35	245	1
1 1/4	32	42.2	71	117	36	270	1.5
1 1/2	40	48.3	77	121	37	280	1.7
2	50	60.3	90	126	38	290	2.3



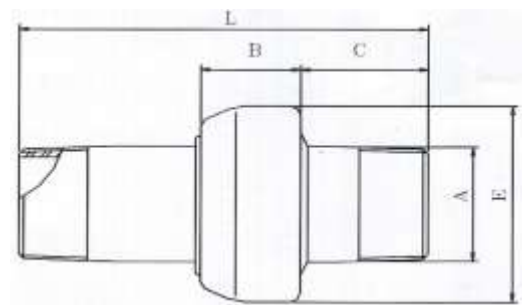
**FEMALE / FEMALE**

DIAMETER		DIMENSIONS (MM)						WEIGHT (KG)
INCH	MM	A	E	C	B	L		
3/4	20	26.7	53	27	30	135	0.6	
1	25	33.4	60	29	32	142	0.9	
1 1/4	32	42.2	71	32	35	165	1.3	
1 1/2	40	48.3	77	32	37	175	1.5	
2	50	60.3	90	36	38	180	2.2	



**MALE / MALE**

DIAMETER		DIMENSIONS (MM)						WEIGHT (KG)
INCH	MM	A	E	C	B	L		
1/2	15	21.3	46	35	28	110	0.4	
3/4	20	26.7	53	27	30	135	0.6	
1	25	33.4	60	29	32	142	0.9	
1 1/4	32	42.2	71	32	35	165	1.3	
1 1/2	40	48.3	77	32	37	175	1.5	
2	50	60.3	90	36	38	180	2.2	



**PN25**

DIAMETER		DIMENSIONS (MM)						WEIGHT (KG)
INCH	MM	S	A	E	C	B	L	
3	75	5.49	88.9	127	172	56	400	6
4	100	4.78	114.3	153	168	64	400	9
6	150	4.78	168.3	219	210	80	500	20
8	200	6.35	219.1	273	205	90	500	30

